

HB 2017 Transit Advisory Committee

January 26, 2024

Webex

Chat

- Right side window
- Chats are recorded

Participants

- Right side window
- Raise your hand

Video On/Off

Reactions

Leave Meeting

Mute/Unmute



Meeting Agenda

Public comment	10:00 a.m.
Committee Introductions	10:05 a.m.
STIF Process Orientation	10:20 a.m.
FY26-27 STIF Equity Map	10:50 a.m.
Meeting Adjourns	11:30 a.m.

Public Comment



Committee Introductions

STIF Process Orientation

What is HB 2017?

What's in a name?

- HB 2017 Keep Oregon Moving Act
- Statewide Transportation Improvement Fund (STIF)

Employee payroll tax

- 1/10th of 1 percent of all payroll statewide
- 90% of funds in TriMet's district comes back to TriMet

TriMet is the “Qualified Entity” for the 3-county area

- Pass funds through to the counties and small transit providers outside the TriMet area

STIF Plan

In order to receive STIF funds:

- Develop a STIF plan
 - Currently in the FY24-25 biennium
 - Committee will work on the plan for the FY26-27 biennium
 - TriMet district and non-TriMet district funds

Citizen Advisory Committee

- 25 member committee representing customers, underserved communities,* transit providers,* seniors & people with disabilities,* business associations, and jurisdictions
- TriMet Board of Directors appoints the committee and approves bylaws
- Meet twice/year; more often in plan development years
- Approve the *Public Transportation Improvement Plan (PTIP)*

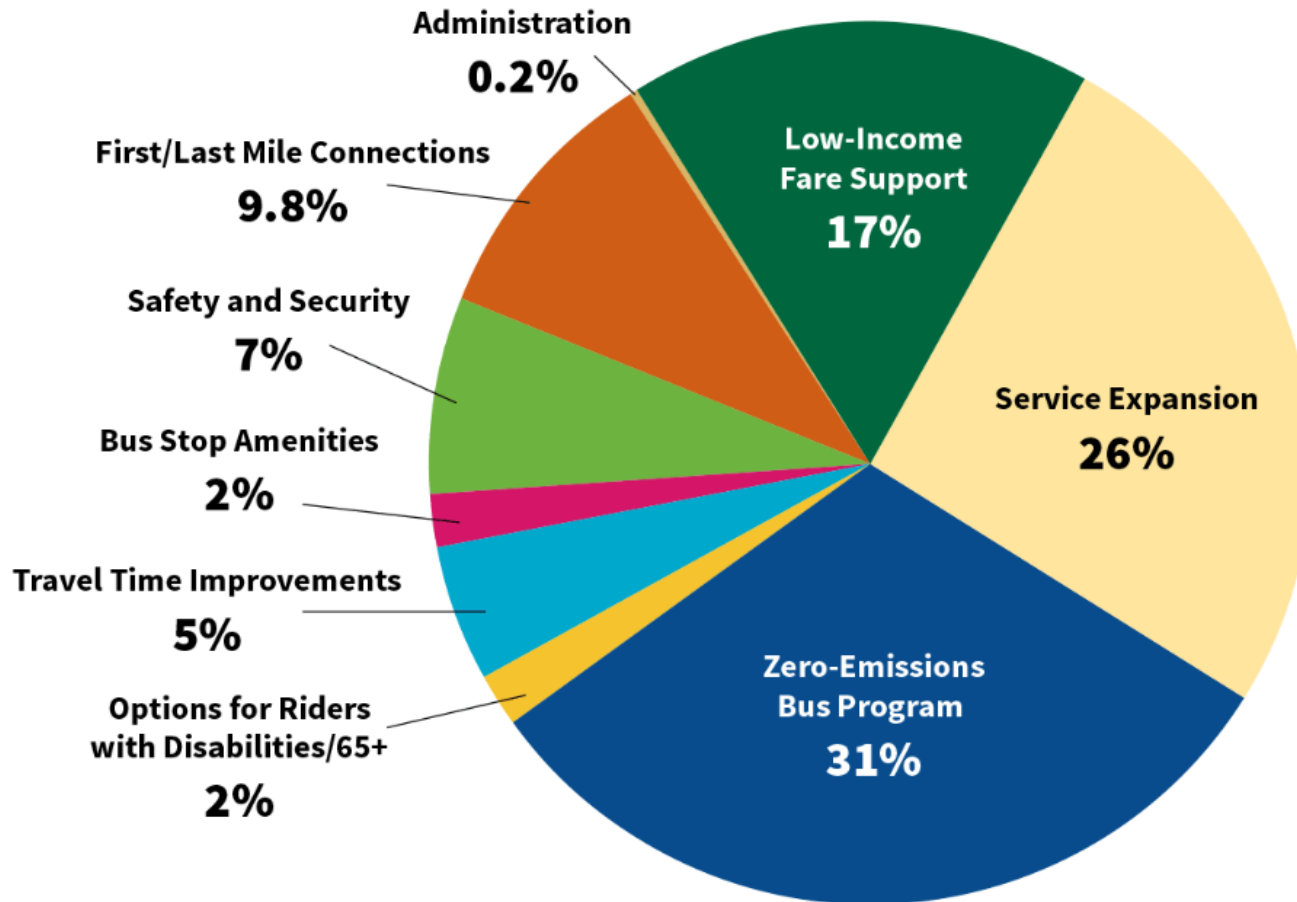
STIF Legislation

Focus:

- Expansion of bus routes and service to low-income areas
- Increased Frequency to low-income areas
- Natural gas or electric buses
- Fare reduction for low-income communities
- Improved connections inside/outside districts
- Reduced fragmentation of services
- 1% of funds spent on student transportation

FY24-25 Plan

Here's a look at our plan



**FY24-25
STIF Plan**

STIF Pay vs. STIF Pop

STIF Payroll Based Formula Funds (STIF Pay):

- Funds derived from where payroll is generated

STIF Population Based Formula Funds (STIF Pop):

- Formerly called Special Transportation Funds (STF)
 - Transportation programs for older adults and people with disabilities
 - STF: cigarette tax, ID card fees, non-auto. gas tax, & STIF Pay funds

FY26-27 Projections - ODOT

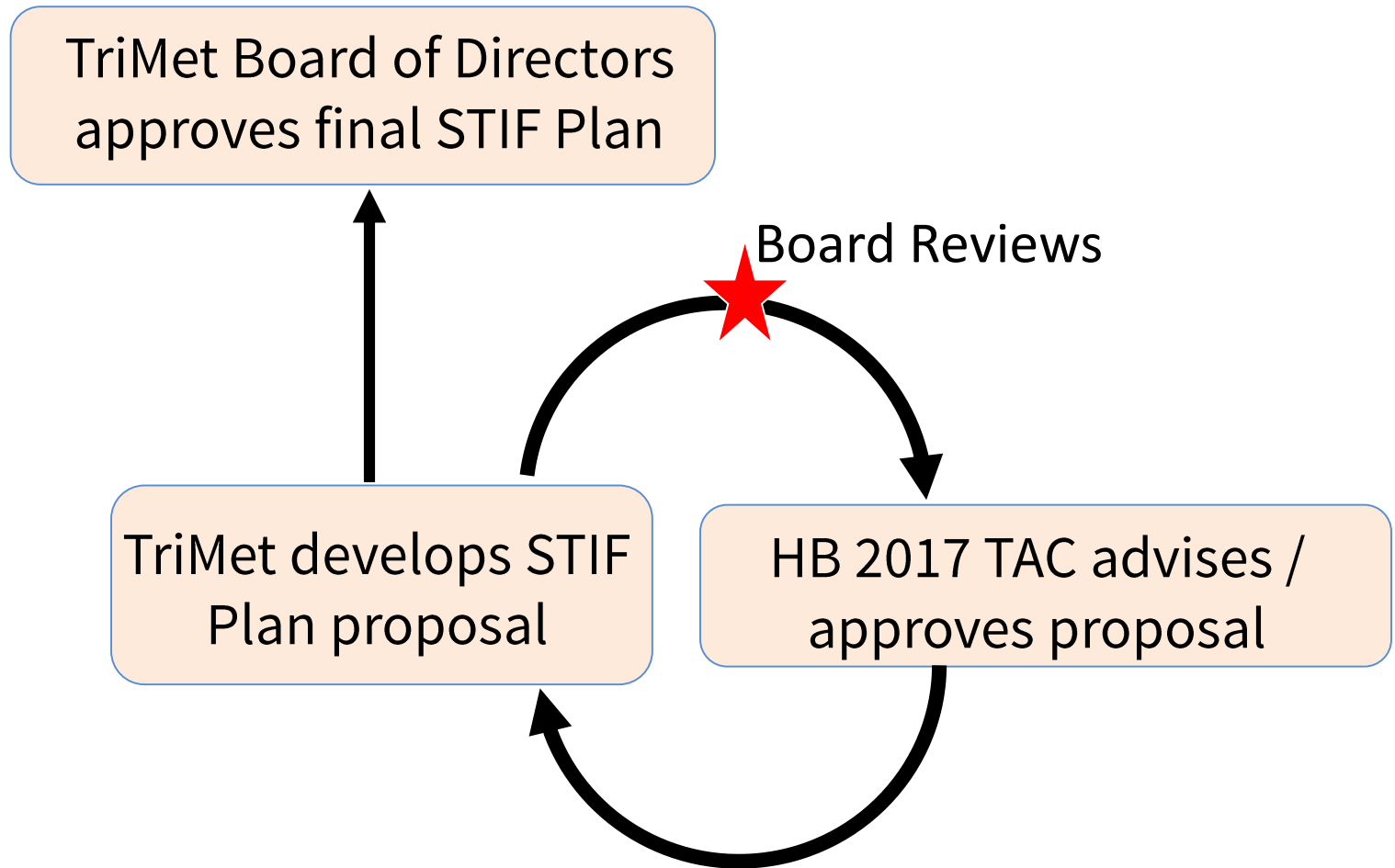
STIF Pay:

	FY24	FY25	FY26	FY27
Tri County Metropolitan Transportation District	\$ 59,022,383	\$ 68,090,304	\$ 69,321,379	\$ 72,824,433
In district	\$ 56,211,290	\$ 64,847,327	\$ 66,019,768	\$ 69,355,981
Out of district Clackamas County	\$ 2,107,248	\$ 2,430,996	\$ 2,474,949	\$ 2,600,016
Out of district Multnomah County	\$ 55,122	\$ 63,591	\$ 64,741	\$ 68,012
Out of district Washington County	\$ 648,723	\$ 748,390	\$ 761,921	\$ 800,424

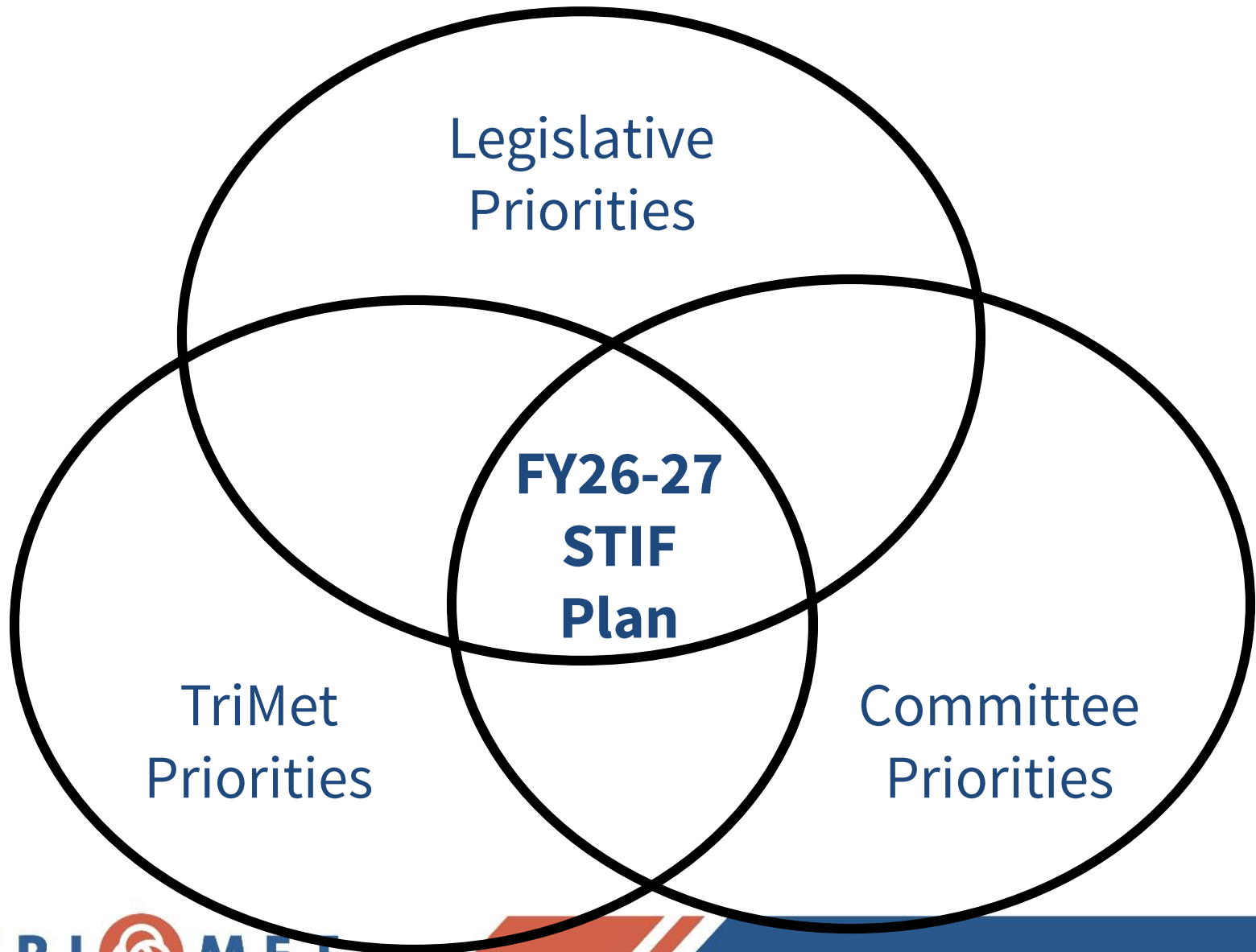
STIF Pop:

	FY24	FY25	FY26	FY27
Tri County Metropolitan Transportation District	\$ 4,791,360	\$ 4,791,360	\$ 5,254,256	\$ 5,254,256
In district	\$ 4,329,173	\$ 4,329,173	\$ 4,747,417	\$ 4,747,417
Out of district Clackamas County	\$ 341,174	\$ 341,174	\$ 374,135	\$ 374,135
Out of district Multnomah County	\$ 15,030	\$ 15,030	\$ 16,481	\$ 16,481
Out of district Washington County	\$ 105,983	\$ 105,983	\$ 116,221	\$ 116,221

Decision Making Process



STIF Plan Process Goal



The Committee is Advisory

Legislative
Priorities

**FY26-27
STIF
Plan**

TriMet
Priorities

Committee
Priorities

Timeline for STIF Plan Process

Jan. '24	Feb.	Mar.	April	May	June	July	Aug.	Sept.	Oct.	Nov.	Dec.	Jan. '25	
STIF Pay													
Internal Process - Develop STIF Proposal				★	Advisory Process: HB 2017 TAC / TriMet				★	HB 2017 TAC Approval			★
											Board Approval	Submit Plan to ODOT	

★ TriMet Board of Directors Review

STIF Plan Approval Process

HB 2017 Transit Advisory Committee
(STIF Advisory Committee)



TriMet Board of Directors



Public Transportation Advisory Committee
(PTAC)



Oregon Transportation Commission
(OTC)

STIF Equity Map

TriMet Equity Index

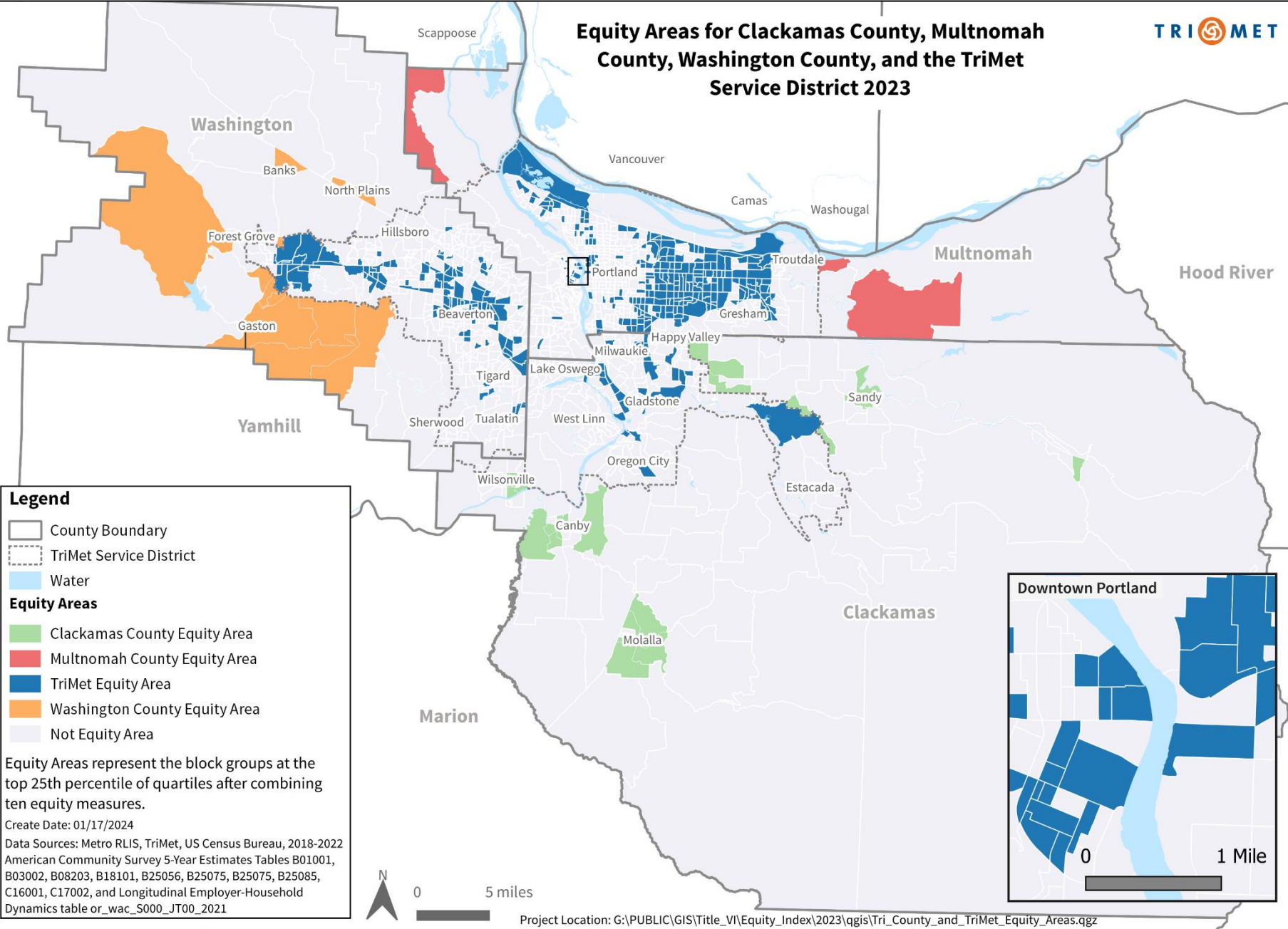
Equity Index 10 Factor Analysis:

- Low income population (200% of poverty)
- People of color
- Limited English proficiency
- People with disabilities
- Older adults (65+)
- Youth population (-22)
- Low & medium wage jobs
- Limited vehicle access
- Affordable housing units
- Key retail/human/social services

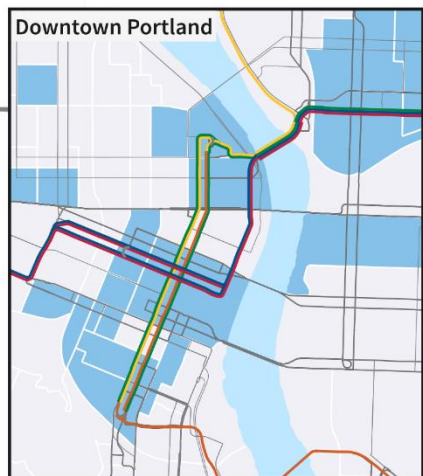
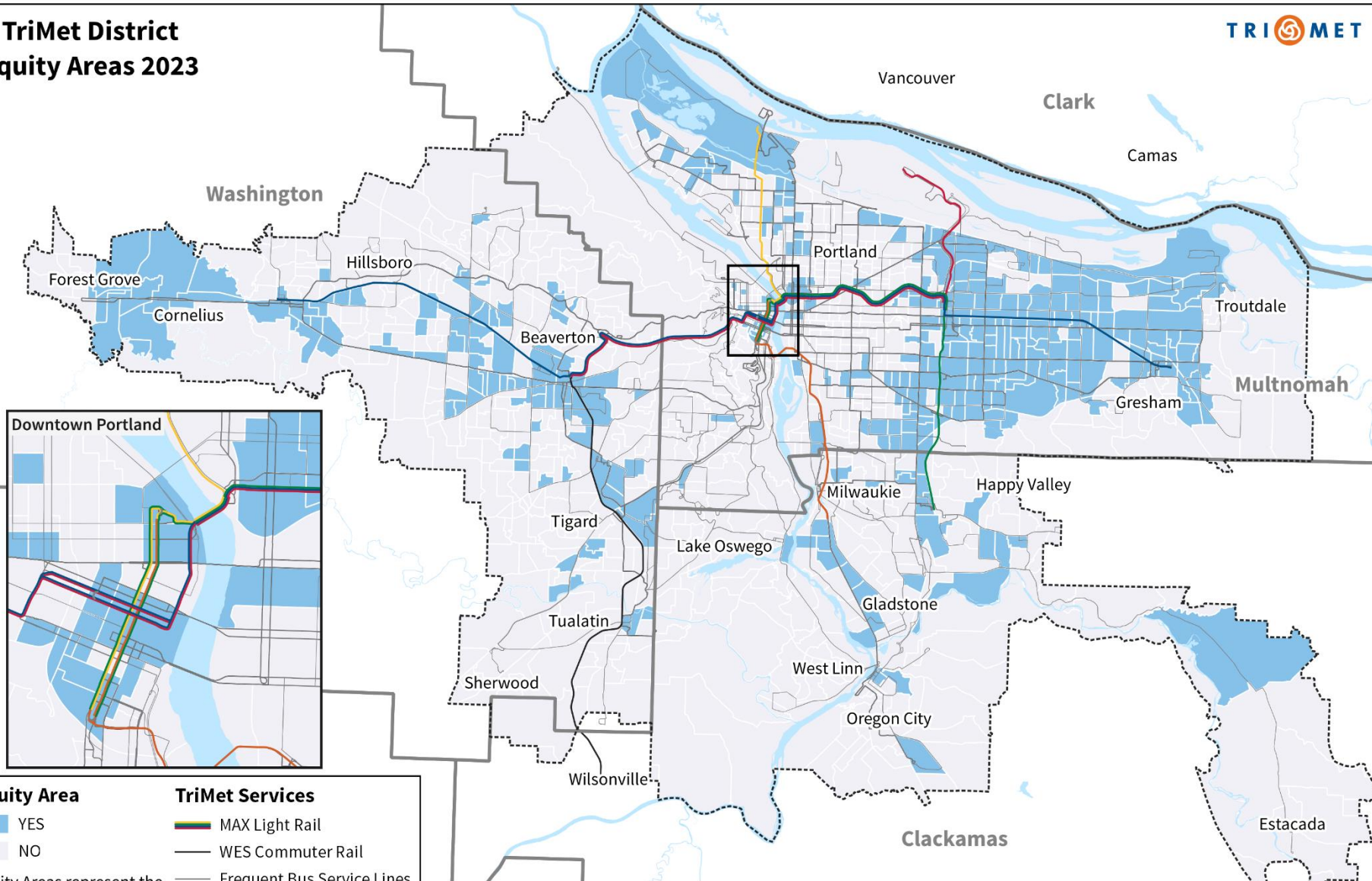
Top scoring quartile compose the equity areas

Separate maps for county areas outside of TriMet

Equity Areas for Clackamas County, Multnomah County, Washington County, and the TriMet Service District 2023



TriMet District Equity Areas 2023



Equity Area

- YES
- NO

TriMet Services

- MAX Light Rail
- WES Commuter Rail
- Frequent Bus Service Lines
- Bus Lines
- TriMet Service District
- County Boundary

Equity Areas represent the block groups at the top 25th percentile of quartiles after combining ten equity measures.

Data: Metro RLIS, TriMet, US Census Bureau, 2018-2022 American Community Survey 5-Year Estimates Tables B01001, B03002, B08203, B18101, B25056, B25075, B25075, B25085, C16001, C17002, and Longitudinal Employer-Household Dynamics table of_wac_S000_JT00_2021

Project Location: G:\PUBLIC\GIS\Title_VI\Equity_Index\2023\qgis\TriMet_Equity_Areas.qgz Create Date: 01/17/2024

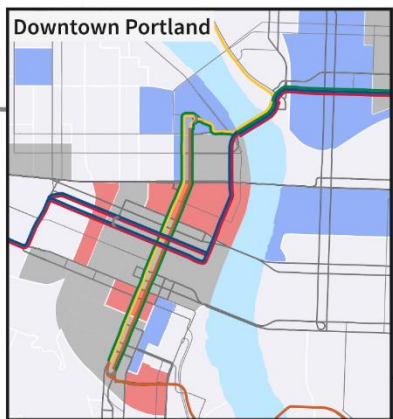
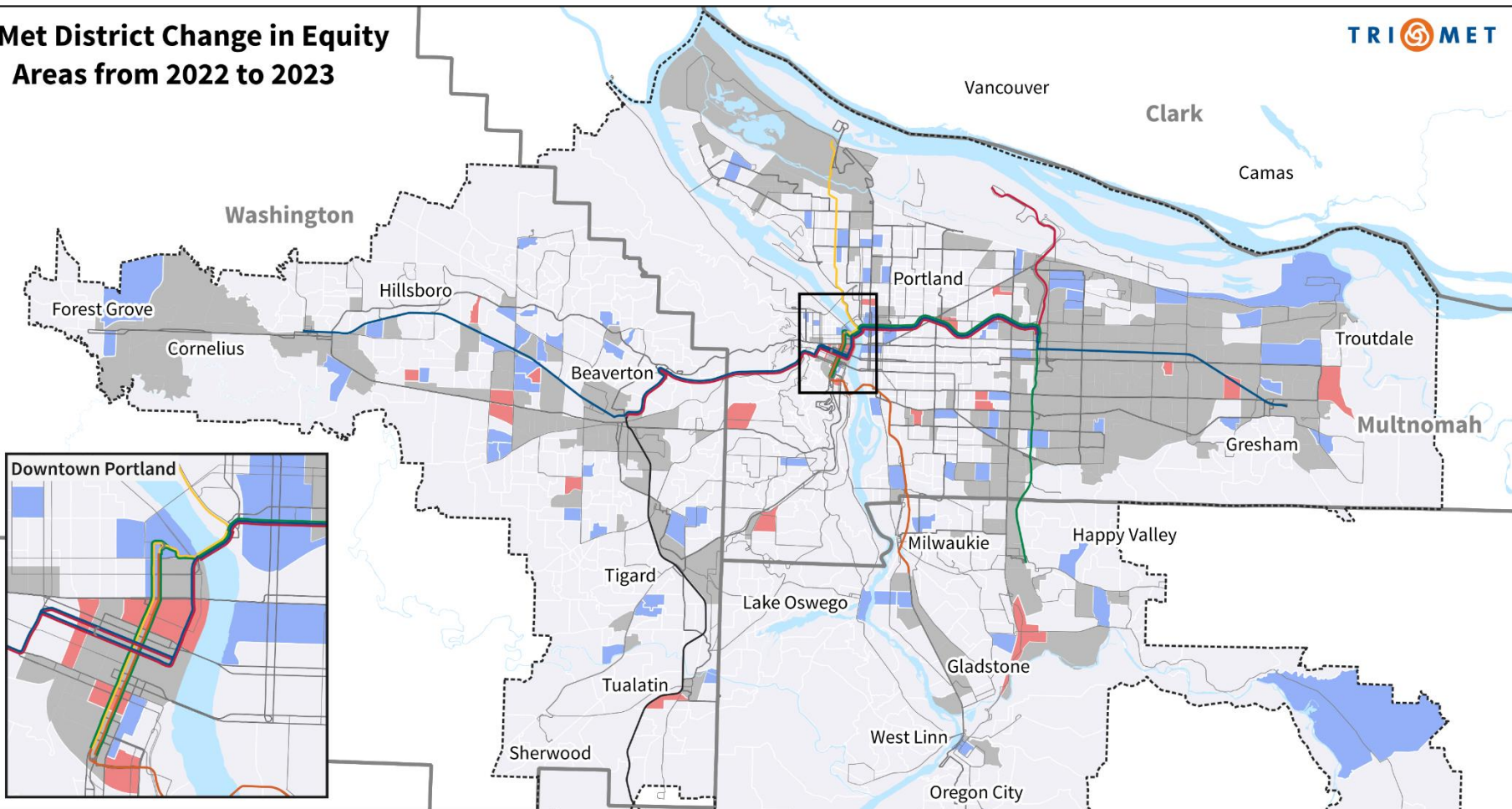


0

5 miles



TriMet District Change in Equity Areas from 2022 to 2023



Change in Equity Areas by Block Group 2022 to 2023

- Addition of Equity Area
- No Change Equity Area
- Loss of Equity Area
- No Change Non-Equity Area

Change was determined by comparing Equity Areas from 2022 to Equity Areas from 2023.

TriMet Services

- MAX Light Rail
- WES Commuter Rail
- - - Frequent Bus Service Lines
- Bus Lines
- TriMet Service District
- County Boundary

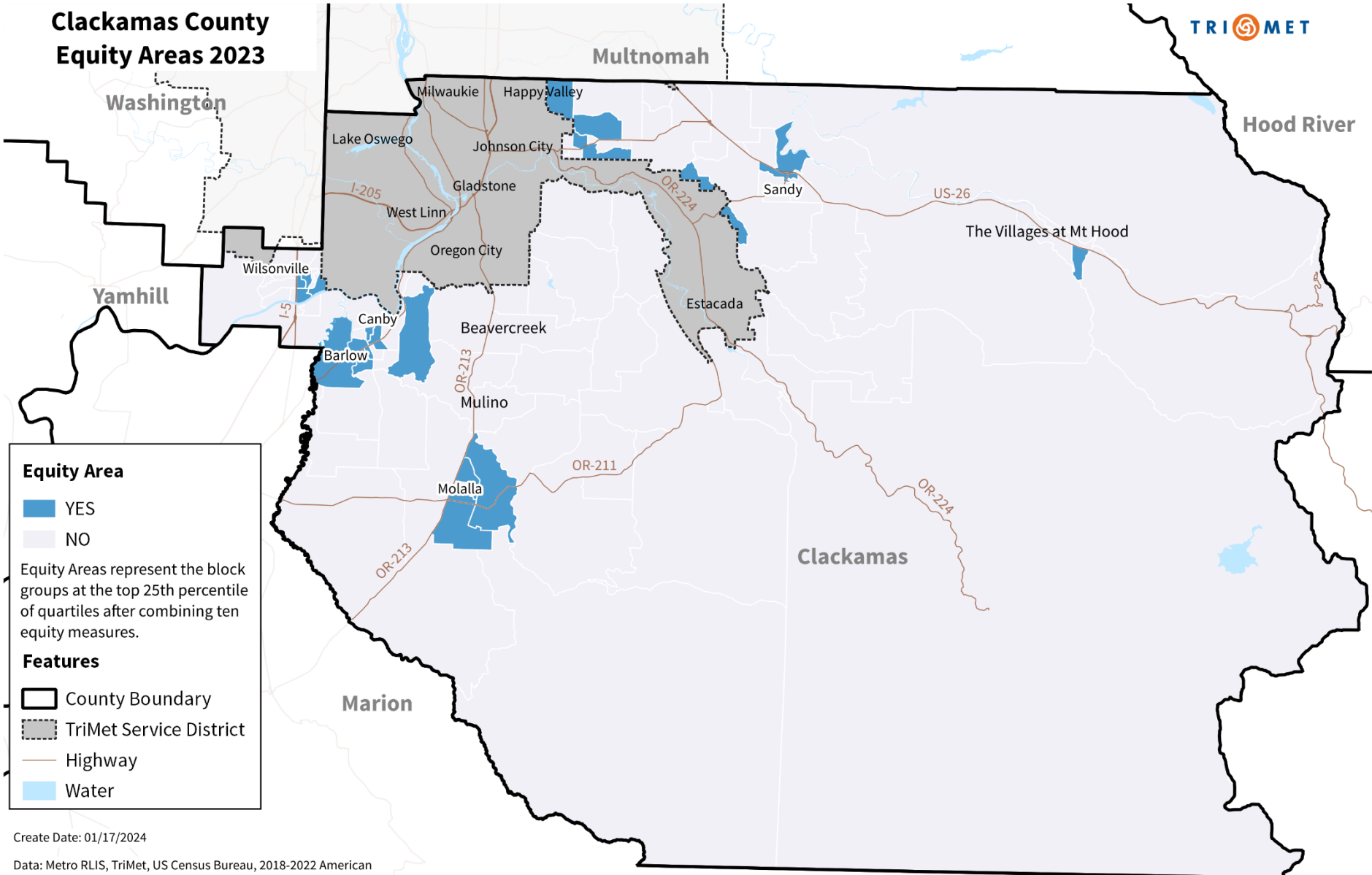
Create Date: 01/17/2024

Data: Metro RLIS, TriMet, US Census Bureau, 2018-2022 American Community Survey 5-Year Estimates Tables B01001, B03002, B08203, B18101, B25056, B25075, B25075, B25085, C16001, C17002, and Longitudinal Employer-Household Dynamics table or_wac_s000_JT00_2021

Project Location: G:\PUBLIC\GIS\Title_VI\Equity_Index\2023\qgis\TriMet_Equity_Areas_Change_2022_to_2023.qgz



Clackamas County Equity Areas 2023



Equity Area

- YES
- NO

Equity Areas represent the block groups at the top 25th percentile of quartiles after combining ten equity measures.

Features

- County Boundary
- TriMet Service District
- Highway
- Water

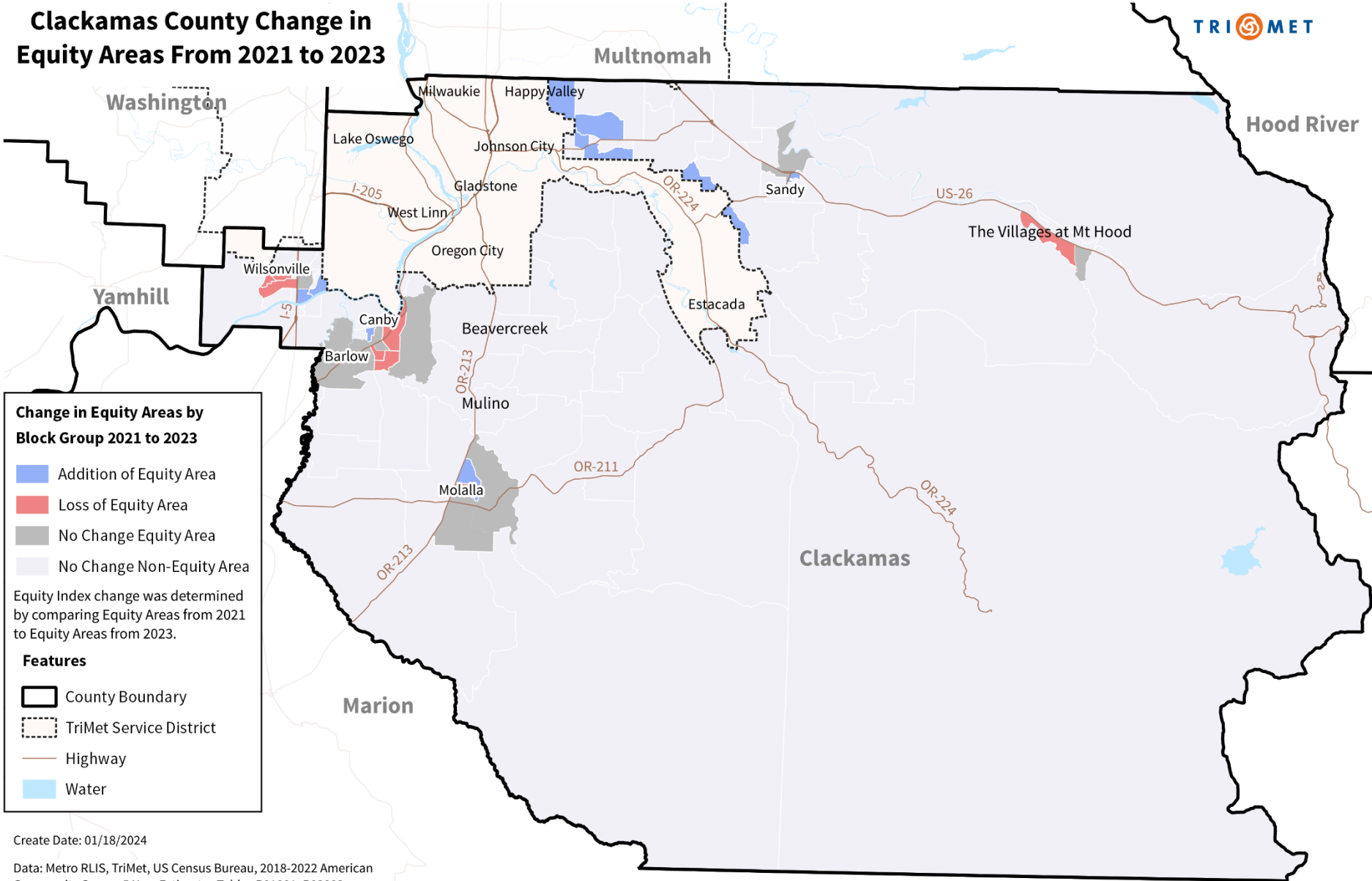
Create Date: 01/17/2024

Data: Metro RLIS, TriMet, US Census Bureau, 2018-2022 American Community Survey 5-Year Estimates Tables B01001, B03002, B08203, B18101, B25056, B25075, B25085, C16001, C17002, and Longitudinal Employer-Household Dynamics table or_wac_S000_JT00_2021

Project Location: G:\PUBLIC\GIS\Title_VI\Equity_Index\2023\qgis\Clackamas_Equity_Index_2023.qgz



Clackamas County Change in Equity Areas From 2021 to 2023



Change in Equity Areas by Block Group 2021 to 2023

- Addition of Equity Area
- Loss of Equity Area
- No Change Equity Area
- No Change Non-Equity Area

Equity Index change was determined by comparing Equity Areas from 2021 to Equity Areas from 2023.

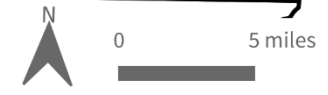
Features

- County Boundary
- TriMet Service District
- Highway
- Water

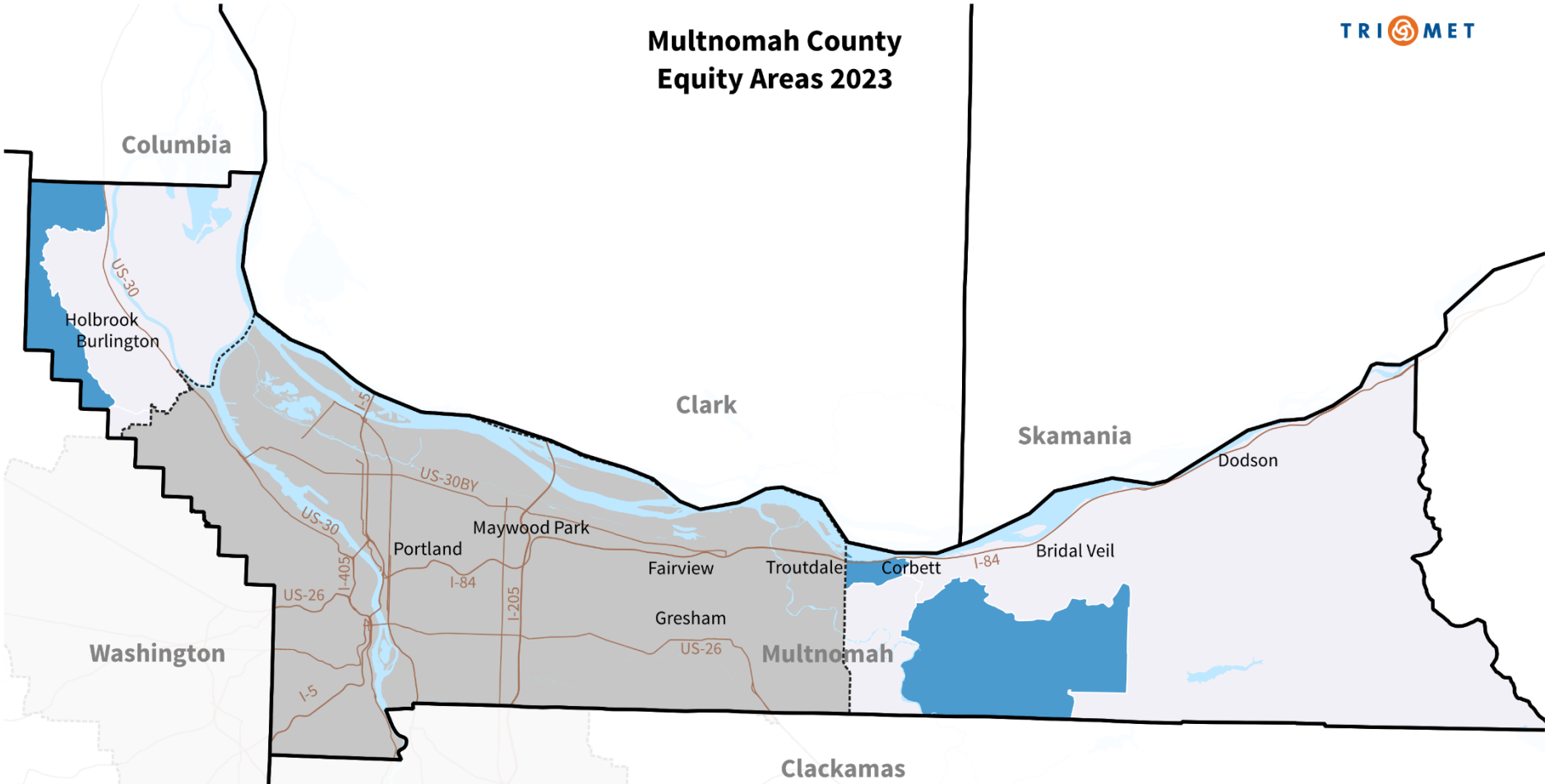
Create Date: 01/18/2024

Data: Metro RLIS, TriMet, US Census Bureau, 2018-2022 American Community Survey 5-Year Estimates Tables B01001, B03002, B08203, B18101, B25056, B25075, B25075, B25085, C16001, C17002, and Longitudinal Employer-Household Dynamics table or_wac_S000_JT00_2021

Project Location: G:\PUBLIC\GIS\Title_VI\Equity_Index\2023\qgis\Clackamas_Equity_Index_Change_2021_2023.qgz



Multnomah County Equity Areas 2023



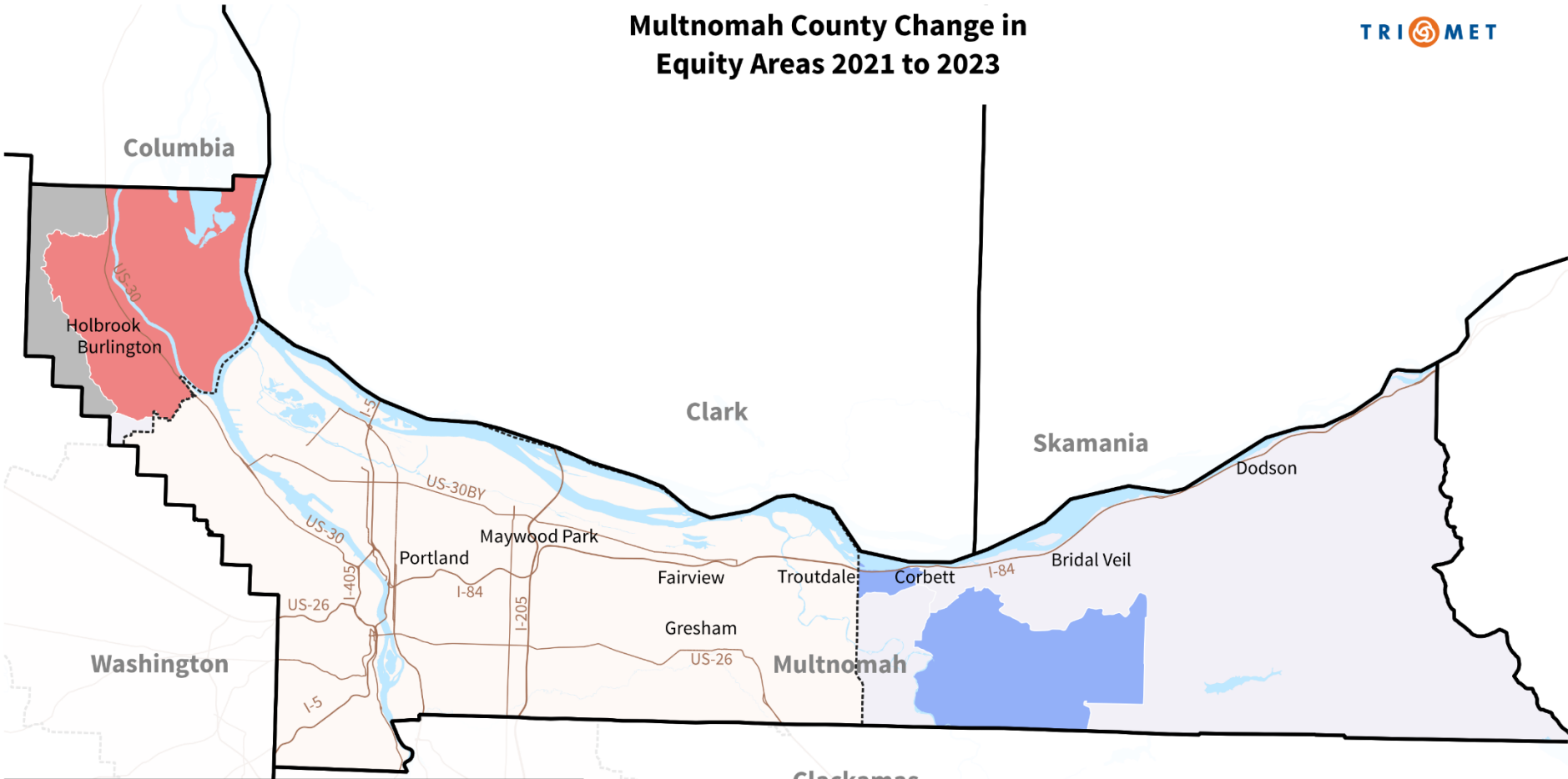
Equity Area	Features
 YES	 County Boundary
 NO	 TriMet Service District
	 Highway
	 Water

Equity Areas represent the block groups at the top 25th percentile of quartiles after combining ten equity measures.

Data: Metro RLIS, TriMet, US Census Bureau, 2018-2022 American Community Survey 5-Year Estimates Tables B01001, B03002, B08203, B18101, B25056, B25075, B25075, B25085, C16001, C17002, and Longitudinal Employer-Household Dynamics table or_wac_s000_JT00_2021



Multnomah County Change in Equity Areas 2021 to 2023



Change in Equity Areas by Block Group 2021 to 2023	Features
■ Addition of Equity Area	 County Boundary
■ No Change Equity Area	 TriMet Service District
■ Loss of Equity Area	 Highway
■ No Change Non-Equity Area	■ Water

Equity Index change was determined by comparing Equity Areas from 2021 to Equity Areas from 2023.

Data: Metro RLIS, TriMet, US Census Bureau, 2018-2022 American Community Survey 5-Year Estimates Tables B01001, B03002, B08203, B18101, B25056, B25075, B25075, B25085, C16001, C17002, and Longitudinal Employer-Household Dynamics table or_wac_S000_JT00_2021



Washington County Equity Areas 2023



Equity Area

- YES
- NO

Equity Areas represent the block groups at the top 25th percentile of quartiles after combining ten equity measures.

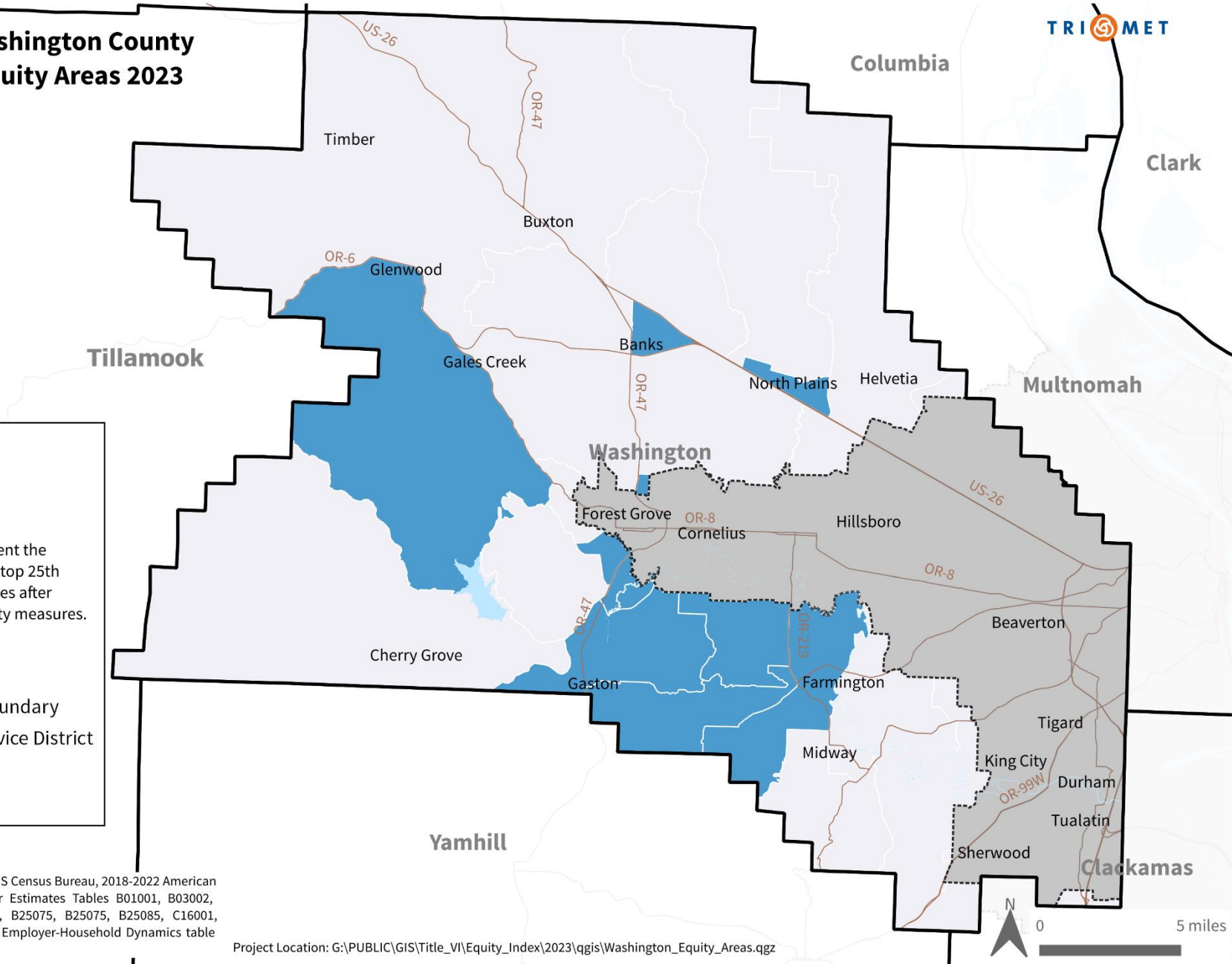
Features

- County Boundary
- TriMet Service District
- Highway
- Water

Create Date: 01/17/2024

Data: Metro RLIS, TriMet, US Census Bureau, 2018-2022 American Community Survey 5-Year Estimates Tables B01001, B03002, B08203, B18101, B25056, B25075, B25075, B25085, C16001, C17002, and Longitudinal Employer-Household Dynamics table or_wac_S000_JT00_2021

Project Location: G:\PUBLIC\GIS\Title_VI\Equity_Index\2023\qgis\Washington_Equity_Areas.qgz



Washington County Change in Equity Areas 2021 to 2023



Change in Equity Areas by Block Group 2021 to 2023

- Addition of Equity Area
- No Change Equity Area
- Loss of Equity Area
- No Change Non-Equity Area

Equity Index change was determined by comparing Equity Areas from 2021 to Equity Areas from 2023.

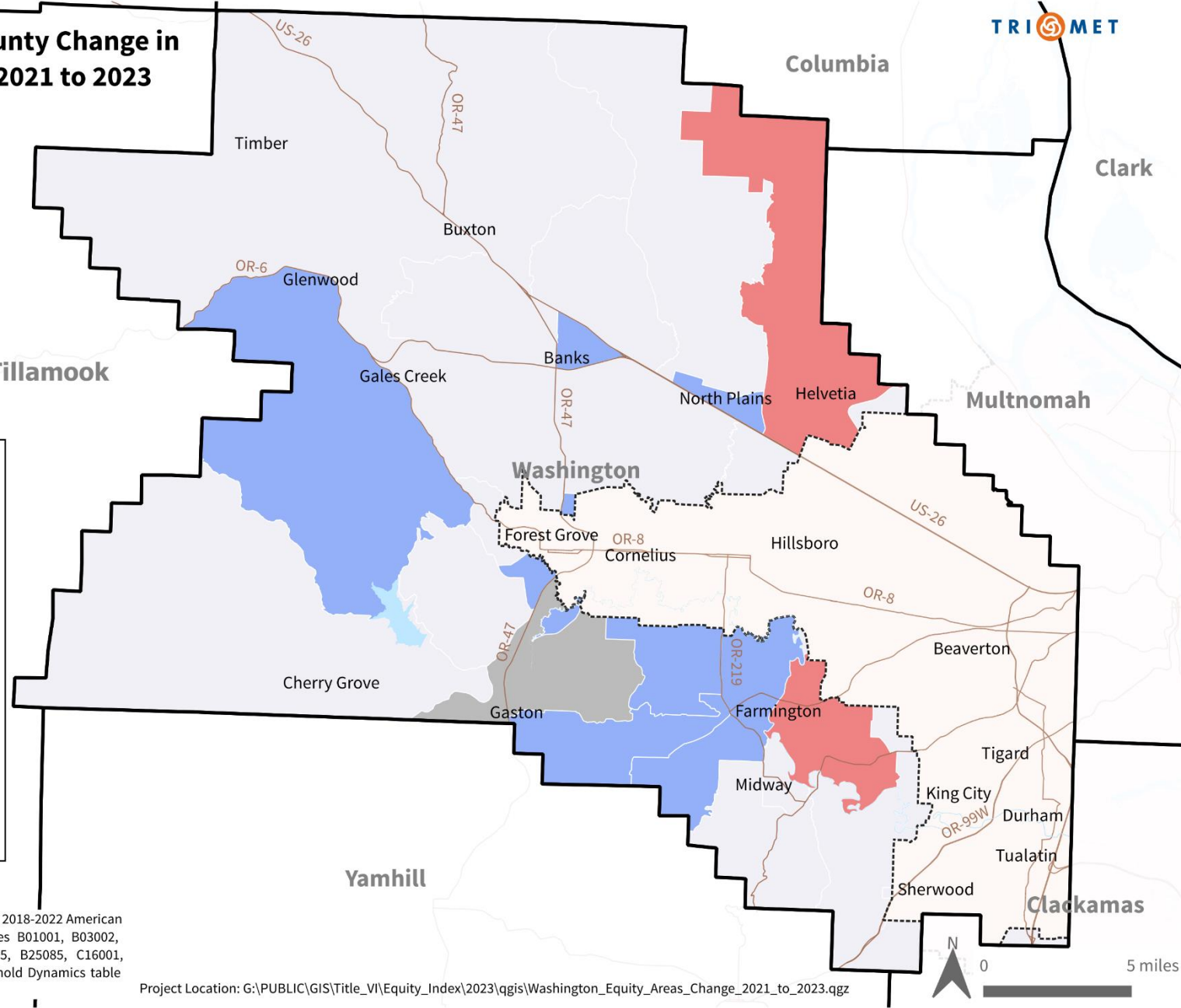
Features

- County Boundary
- TriMet Service District
- Highway
- Water

Create Date: 01/18/2024

Data: Metro RLIS, TriMet, US Census Bureau, 2018-2022 American Community Survey 5-Year Estimates Tables B01001, B03002, B08203, B18101, B25056, B25075, B25075, B25085, C16001, C17002, and Longitudinal Employer-Household Dynamics table or_wac_S000_JT00_2021

Project Location: G:\PUBLIC\GIS\Title_VI\Equity_Index\2023\qgis\Washington_Equity_Areas_Change_2021_to_2023.qgz



Equity Map Adjustments

Outside the TriMet District

- Equity communities in rural areas get overwhelmed by large census block groups
- Some TriMet Equity Index factors may not apply well to rural areas
- Recommend allowing counties to adjust equity map outside the TriMet District to better “ground truth” the results

Meeting Adjourned